

TOUCH MONITOR

MT-15

Industrial grade Touch Monitor to work in the most demanding environment



Description	Touch Monitor
Display	15" Industrial grade TFT LCD with Stand
Display Resolution	1024 x 768 pixels
Touch sensor	6-wire resistive Touch (USB interface)
Power supply	DC 12V / 5A Adapter



POS PRINTER

PR-Series

High speed & reliable printers for faster customer service



Description	PR-85
Printing Method	Thermal Line Printing
Printing Speed	220mm/sec (max)
Paper width	79.5 ± 0.5mm
Printer Interface	Parallel/Serial+USB/Ethernet (any one)
Cutter	Full or Partial cut
Print head reliability	100 Km
Power Supply	DC 24V / 2.5A Adaptor
Cash Drawer interface	24V DC

Description	PR-76
Printing Method	Impact dot-matrix
Printing Speed	4.5 lines/sec (max)
Paper width	76 ± 0.5mm
Printer Interface	Parallel/Serial (any one)
Print head reliability	10 million lines
Power Supply	DC 24V / 2.5A Adaptor
Cash Drawer interface	24V DC





CUSTOMER DISPLAY

CD-460

Easy-to-read VFD display keeps your customer informed of the progress of the transaction

Description	Customer Display
Display type	Graphic dot-matrix VFD display 5x7 dot + cursor
Mounting	Stand-alone Pole Type
Characters	20 x 2 Lines
Interface	Serial (RS-232C)
Power Supply	DC 9V/500mA Adaptor

POS KEYBOARD

KB-78

User-friendly & durable programmable keyboard ensures easy customization to suit any business

Description	POS Keyboard
Keys	78 Key Programmable
Key Life cycle	10 million cycles
Dimension (mm)	234(L) x 144(W) x 45(H)



Description	Versa Key board USB interface with MSR
Key	104 keys
Life Cycle	20 million key strokes & 1 million card Swipes
Interface	USB
Mock	ABS, meets flammability spec. UL94HB
Dimensions L x W x H	358.8mm x 177.8mm x 40.0mm



CASH DRAWER

Highly durable & secure Metallic cash drawer protects your profits

Description	Cash Drawer
Interface	24V DC/1A, RJ-11 Connector (compatible with PR-Series printer)
MOC	Body-Metal, Tray-ABS Plastic, Clip-Metal
Tray	4 bill, 8 Coin
Security	Lock & Key
Dimension (mm)	410(W) x 405(D) x 90(H)

Essae-Teraoka Ltd.

410, 100ft Road, 4th Block,
Koramangala, Bengaluru-560 034
+91 80 3021 3000
+91 80 3021 3001

info@essae.com
http://www.essae.com
1-800-425-3111

47 Branches
Factories in Bengaluru and Goa
300+ Resellers

Essae[®]
...for Excellence

POS-415 POS System



A Winning combination of features that delivers high Performance & Reliability



Technical Specification

POS-415

Processor CPU

Intel Baytrail J1900 **QUAD-CORE** 2.00GHz processor Embedded, Low Power, **FANLESS** processor, 2MB Cache memory with Integrated Graphics chipset

Operator Display

LCD Size	15-inch TFT LCD with LED Backlight, Anti-glare
Maximum Resolution	1024 x 768
Brightness	400nits
Touch Screen	5-Wire Resistive

Memory

System Memory	4GB DDR3L RAM (Low Voltage)
Storage Memory	64GB Solid State Disk (SSD)

External Interface Port

USB Port	5 x USB (2 x USB 3.0 , 3 x USB 2.0)
Serial	3 x Serial (1 x DC +12V powered)
Network	1 x Gigabit LAN, 10/100/1000 Mbps, RJ-45
VGA	1 x VGA (Independent), DB9
Audio	1 x Line-In, 1 x Line-out

In-built Factory Options

Storage Memory	128GB Solid State Disk (SSD) or 500GB Hard Disk Drive (HDD)
Operating System	Windows Embedded POSReady 7 (32-BIT OR 64-BIT) – Pre-installed
Wireless Network	Wi-Fi LAN module (Mini-PCIe)

Environmental

Operating Temperature	5°C ~ 40°C
Storage Temperature	-20°C ~ 55°C
Power Adapter	DC 12V/5A 60W

Optional Accessories & Peripheral devices

Printer	High speed POS thermal printer, 76mm paper, 260mm/sec, Auto-cutter, Serial+USB+LAN interface
Cash Drawer	4-Bill/8-Coin Metal Cash Drawer with Lock & Key and micro-switch
MSR	3 Tracks – OPOS Compliant, USB interface
Customer Display	10.4-inch Touch LCD, VGA interface (rear mounted) Display resolution: 800 x 600 OR 20x2 Graphic LCD, Serial interface (rear mounted) OR 20x2 VFD, Serial interface (standalone type)
Mounting options	VESA-compliant Wall Mount Kit
Dimension (WxDxH)	4° tilt angle: 370mm x 220mm x 360mm 84° tilt angle: 370mm x 290mm x 310mm
Net Weight (without any accessories)	5.6 Kg (approx)
Housing	MOC: ABS, Colour: Black with Sturdy Table stand

Windows Embedded POSReady 7

Operating System Supported (both 32-BIT & 64-BIT versions)	Windows 7 Professional Windows Embedded Standard 7 Windows Embedded Standard 8.1 Windows 8.1 Pro Linux, as per specific request and confirmation only
--	---

Customer Display

10.4-inch Touch LCD



Enables Customer feedback & Promotions

CD-810 20x2 Graphic LCD



CD-460 Pole display



MSR



Enables payment & Customer Loyalty Programs

Essae-Teraoka Pvt. Ltd.

410, 100ft Road, 4th Block, Koramangala, Bengaluru-560 034

info@essae.com

http://www.essae.com

+91 80 3021 3021

+91 80 3021 3001

1-800-425-3111

0-78488 12346

Essae[®]
...for Excellence

Your Essae representative

▲ Factories in Bengaluru and Goa ▲ 47 Branch Offices ▲ 250+ Service engineers ▲ 350+ Resellers/Partners

Note: Specifications are subject to change without notice. Other names and logos used are property of respective brands.

POS-455

POS System

Essae[®]
...for Excellence



True FLAT
PCAP Touch



Fanless



Compact
Footprint



IP 54

Display



Signature
Design

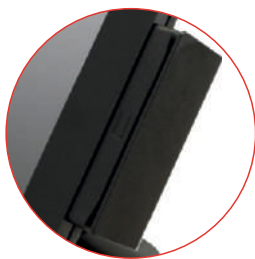


Presenting a truly Elegant, Stylish & Super Slim POS System

Technical Specification

Model	POS-455B	POS-455C
CPU	Intel Baytrail J1900 QUAD CORE 2.00 GHz processor, embedded Low power, Fanless Processor, 2 MB Cache Memory	Intel Core i3-6100U 2.30 GHz Processor, Fanless 3 MB Cache Memory
Operator Display		
Size	15-inch TFT LCD	
Maximum Resolution	1024 x 768	
Touch Screen	Projected Capacitive Touch (PCAP) – True FLAT / Bezel Free	
Memory		
Storage Memory	500 GB HDD	
System Memory	4 GB RAM DDR3L RAM (expandable up to 8 GB)	
External Interface ports		
USB	5	6
Serial	3 (RJ-45 type, Powered RS-232)	
Network	1 x Gigabit LAN	
Cash Drawer	1 x RJ-11	
VGA	1 x DB-15 (Independent VGA)	
Audio	1 x Line-In, 1 x Line-out	
Environmental		
Operating Temperature	0°C ~35°C	
Storage Temperature	-20°C ~ 60°C	
Power Adapter	120 W/19V/6.32 A	
Dimensions	360 (L) x 203 (D) x 277 (H) mm	
Optional Accessories		
MSR	3-Track, USB interface	
Customer Display	LCM Display 2 x 20 characters, USB interface	
Operating System		
Operating System supported (Both 32-bit & 64-bit versions)	Windows 10 IoT Enterprise Entry, Windows 10 Windows 7, Windows POSReady 7 Linux (Subject to Confirmation)	Windows 10 IoT Enterprise Value, Windows 10 Windows 7 Pro, Windows POSReady 7 Linux (Subject to Confirmation)

Accessories







MSR



Customer Display

Essae-Teraoka Pvt. Ltd.

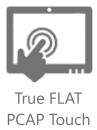
 410, 100ft Road, 4th Block,
Koramangala, Bengaluru-560 034
 info@essae.com
 http://www.essae.com

 +91 80 3021 3021
 1-800-425-3111
 0-78488 12346


 ...for Excellence

Your Essae representative

POS-534 POS System

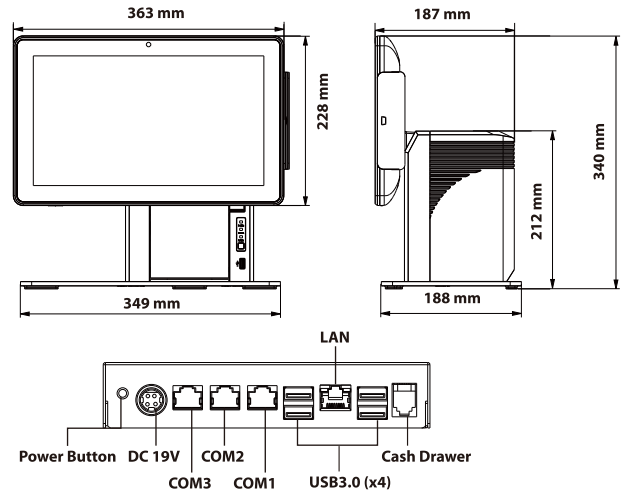


A Compact yet powerful All-in-One POS System with Built-in Printer

Saves precious counter space & avoids messy cabling



- 14" True FLAT Display with PCAP Touch
- Intel Bay Trail Processor J1900
- IP54 Front Display
- Fanless and Silent
- High Speed Built-in Printer
- Signature Design



Technical Specification

Motherboard	Processor System Memory Storage	Intel Bay Trail CPU J1900 2.40GHz 4GB DDR3 64GB SSD
LCD Touch Panel	LCD Size Resolution Touch Screen Tilt Adjustment	14" TFT LCD 1366 x 768 (16:9) True FLAT PCAP Touch 0° ~ 90° (w/o LCM)
External I/O Ports	USB Serial Port LAN Cash Drawer DC Jack	4 x USB3.0/2.0, 1 x USB2.0 at front 3 x RJ48 (powered RS232) (default 0V; 0V/5V/12V) 1 x RJ45 (Gigabit LAN) 1 x RJ11 (default 19V; 12V/19V) 1 x 4 pin w/lock
Control / Indicator	Printer Feed Button Printer LED Indicator	1 3 (Paper, Error, Power)
Power	Power Adapter	120W / 19V
Peripheral	Built-in Printer MSR Customer Display	Paper width 80mm, 170mm/sec, Auto cutter 3-Track MSR (Option) LCM display 20 x 2 characters (Option)
Certificate	EMC & Safety	FCC Class A, CE Mark, LVD
Environment	Dust & Water Proof Operating Temperature Storage Temperature Humidity	IP54 Front Display 0°C ~ 35°C -20°C ~ 60°C 20% ~ 85% RH non-condensing
Dimension (WxDxH)		363 x 188 x 340mm
Weight		5kg
Operating System		Windows 10 IoT ENT 2016 LTSB
Supported		Windows POSReady 7 Linux (Subject to confirmation)

Accessories



Customer Display



MSR

Form No. CAT-POS-534-059 R00

Essae-Teraoka Pvt. Ltd.

410, 100ft Road, 4th Block,
Koramangala, Bengaluru-560 034
info@essae.com
http://www.essae.com

+91 80 3021 3021
+91 80 3021 3001
1-800-425-3111
0-78488 12346



Your Essae representative

▲ Factories in Bengaluru and Goa ▲ 45 Branch Offices ▲ 250+ Service engineers ▲ 350+ Resellers/Partners

Note : Specifications are subject to change without notice. Other names and logos used are property of respective brands.

POS-615 POS System



CORE i3
Processor



True FLAT
PCAP Touch



Windows 10
IoT

Powered by the latest 6th generation Core i3 Processor. Delivers exceptional Performance & Power even in the most demanding applications.



Technical Specification

Model	POS-615B	POS-615C
CPU	Intel Baytrail J1900 QUAD CORE 2.00 GHz processor Embedded, Low Power, FANLESS processor, 2 MB Cache memory	Intel Core i3-6100T 3.20 GHz processor 3 MB Cache memory
Chipset	Intel Baytrail J1900 with Integrated Graphics chipset	Intel H110 Chipset
Operator Display		
Size	15-inch TFT LCD with LED Backlight, Anti-glare	
Maximum Resolution	1024 x 768	
Brightness	350 nits	
Touch Screen	Projected Capacitive Touch (PCAP) – True FLAT	
Memory		
Storage Memory	128 GB Solid State Disk (SSD) or 500 GB HDD	
System Memory	4 GB DDR3L RAM	4 GB DDR4 RAM
External Interface ports		
USB	5	
Serial (DB9)	3	4
Network	1 x Gigabit LAN	2 x Gigabit LAN
Display Port	1 x VGA	1 x HDMI
Audio	1 x Line-In, 1 x Line-out	
Factory options	Wi-Fi LAN module (Mini-PCIe)	
Environmental		
Operating Temperature	5°C ~40°C	
Storage Temperature	-20°C ~ 55°C	
Power Adapter	DC 12 V/5 A 60 W	
Optional Accessories		
Printer	High Speed POS Thermal printer, 76 mm paper, 260 mm/sec, auto-cutter (Serial+USB+LAN) interface	
Cash Drawer	4-Bill/8-Coin Metal Cash Drawer with Lock & Key and micro-switch	
MSR	3 Track-OPOS Compliant, USB interface	
Customer Display	10.4 inch Touch LCD (rear mounted) Display resolution: 800 x 600 or 20 x 2 Graphic LCD (rear mounted) or 20 x 2 Graphic LCD (Pole type)	
Mounting Options	VESA-compliant Wall Mount Kit	
Dimension (W X D X H) (without any accessories)	4° tilt angle :382 mm x 220 mm x 356 mm 84° tilt angle :382 mm x 294 mm x 300 mm	
Net Weight (without accessories)	6.1 kg (approx)	
Operating System		
Operating System supported (Both 32-bit &64-bit versions)	Windows 10 IOT Enterprise 2016 LTSB Entry Windows Embedded POSReady 7 Linux (subject to confirmation)	Windows 10 IOT Enterprise 2016 LTSB Value Windows Embedded POSReady 7 Linux (subject to confirmation)

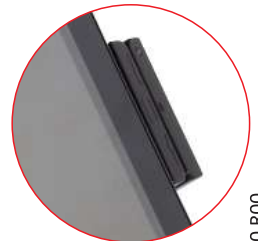
Accessories



20 x 2 LCM
Customer Display



10.4" LCD
Customer Display



MSR

Form No. CAT-POS-615-060 R00

Essae-Teraoka Pvt. Ltd.

410, 100ft Road, 4th Block,
Koramangala, Bengaluru-560 034

info@essae.com

http://www.essae.com

+91 80 3021 3021

+91 80 3021 3001

1-800-425-3111

0-78488 12346

Essae[®]
...for Excellence

Your Essae representative

▲ Factories in Bengaluru and Goa ▲ 45 Branch Offices ▲ 250+ Service engineers ▲ 350+ Resellers/Partners

Note : Specifications are subject to change without notice. Other names and logos used are property of respective brands.

POS-615 POS System



CORE i3
Processor



True FLAT
PCAP Touch



Windows 10
IoT

Powered by the latest 6th generation Core i3 Processor. Delivers exceptional Performance & Power even in the most demanding applications.



Technical Specification

Model	POS-615B	POS-615C
CPU	Intel Baytrail J1900 QUAD CORE 2.00 GHz processor Embedded, Low Power, FANLESS processor, 2 MB Cache memory	Intel Core i3-6100T 3.20 GHz processor 3 MB Cache memory
Chipset	Intel Baytrail J1900 with Integrated Graphics chipset	Intel H110 Chipset
Operator Display		
Size	15-inch TFT LCD with LED Backlight, Anti-glare	
Maximum Resolution	1024 x 768	
Brightness	350 nits	
Touch Screen	Projected Capacitive Touch (PCAP) – True FLAT	
Memory		
Storage Memory	128 GB Solid State Disk (SSD) or 500 GB HDD	
System Memory	4 GB DDR3L RAM	4 GB DDR4 RAM
External Interface ports		
USB	5	
Serial (DB9)	3	4
Network	1 x Gigabit LAN	2 x Gigabit LAN
Display Port	1 x VGA	1 x HDMI
Audio	1 x Line-In, 1 x Line-out	
Factory options	Wi-Fi LAN module (Mini-PCIe)	
Environmental		
Operating Temperature	5°C ~40°C	
Storage Temperature	-20°C ~ 55°C	
Power Adapter	DC 12 V/5 A 60 W	
Optional Accessories		
Printer	High Speed POS Thermal printer, 76 mm paper, 260 mm/sec, auto-cutter (Serial+USB+LAN) interface	
Cash Drawer	4-Bill/8-Coin Metal Cash Drawer with Lock & Key and micro-switch	
MSR	3 Track-OPOS Compliant, USB interface	
Customer Display	10.4 inch Touch LCD (rear mounted) Display resolution: 800 x 600 or 20 x 2 Graphic LCD (rear mounted) or 20 x 2 Graphic LCD (Pole type)	
Mounting Options	VESA-compliant Wall Mount Kit	
Dimension (W X D X H) (without any accessories)	4° tilt angle :382 mm x 220 mm x 356 mm 84° tilt angle :382 mm x 294 mm x 300 mm	
Net Weight (without accessories)	6.1 kg (approx)	
Operating System		
Operating System supported (Both 32-bit &64-bit versions)	Windows 10 IOT Enterprise 2016 LTSB Entry Windows Embedded POSReady 7 Linux (subject to confirmation)	Windows 10 IOT Enterprise 2016 LTSB Value Windows Embedded POSReady 7 Linux (subject to confirmation)

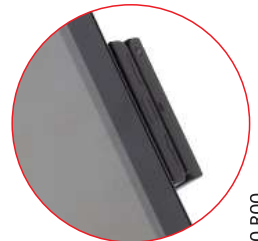
Accessories



20 x 2 LCM
Customer Display



10.4" LCD
Customer Display



MSR

Form No. CAT-POS-615-060 R00

Essae-Teraoka Pvt. Ltd.

410, 100ft Road, 4th Block,
Koramangala, Bengaluru-560 034

info@essae.com

http://www.essae.com

+91 80 3021 3021

+91 80 3021 3001

1-800-425-3111

0-78488 12346

Essae[®]
...for Excellence

Your Essae representative

▲ Factories in Bengaluru and Goa ▲ 45 Branch Offices ▲ 250+ Service engineers ▲ 350+ Resellers/Partners

Note : Specifications are subject to change without notice. Other names and logos used are property of respective brands.